

FUZZY OCTOPUS VALENTINE

By Daniel James
For Ages 7 - 14

This fuzzy felt card is a completely adorable way to let someone know you're stuck on them! The felt octopus's tentacles dangle alluringly off the edge of the card, and he has that sweet come-hither smile. Who could resist?

You'll need:

- Glue stick
- Pretty, patterned text-weight paper (trimmed to 16.5cm x 14cm)
- Card stock (trimmed to 16.5cm x 14cm)
- Right angle or ruler
- Craft knife / Scissors
- Cutting mat, or a magazine
- Corner rounder, or a glass to use as a guide for rounding corners (optional)
- Pens
- Pencil
- Tracing paper
- 4 straight pins
- Felt (at least 19cm square)
- Thread
- Sewing needle
- 2 buttons
- 50cm of embroidery floss
- Embroidery needle
- A hole punch
- 3 to 4 pieces of 5cm x 5cm scrap paper in various colours
- Fine-nibbed glue pen



HOW TO:

1. Make the card

Apply glue to the wrong side of your patterned paper. Centre your card and stick on the patterned paper, then smooth to adhere. Using a right angle or ruler and a utility knife, trim the card down if desired, round the corners using your corner rounder, or align the edge of a glass at each corner and cut around it using your utility knife or scissors.

2. Write your message

Write your message inside the card. We personally like Sucker for you, but feel free to get creative! (Figure 1)

3. Cut out the octopus

Draw your octopus and trace him onto a piece of tracing paper (Figure 2). Pin the tracing paper to your felt using four straight pins (Figure 3). With the tracing paper as your guide, use a pair of scissors to cut out the octopus (Figure 4).



Figure 1



Figure 2



Figure 3

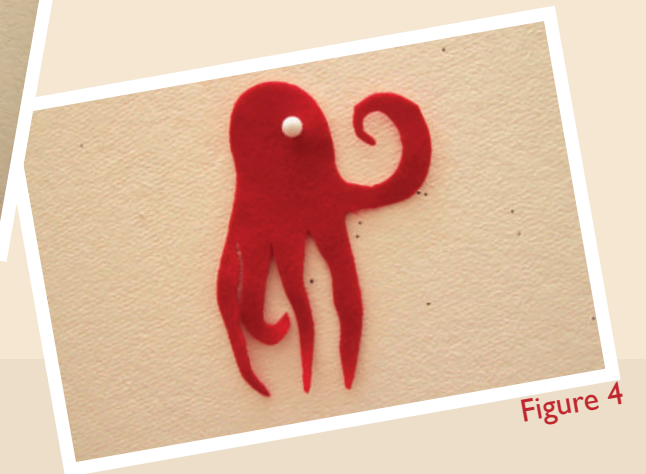


Figure 4

4. Make the face

Make the eyes by sewing two buttons onto the felt (Figure 5). To create the mouth, hand-sew a curved line using the embroidery floss and embroidery needle and a back-stitch.

5. Add the suckers

With your hole punch, punch about 10 dots from various colours of scrap paper or alternatively use coloured quilling paper to create coils. Using your fine-nibbed glue pen, squeeze a very small amount of glue onto the wrong side of one coils or dots and adhere it to one of the octopus's tentacles. Repeat this process with the rest of your coils to create a smattering of suckers on all the tentacles.

6. Attach the octopus

Using your glue stick, apply glue to the wrong side of the octopus and position it on your card (Figures 6). Smooth to adhere.

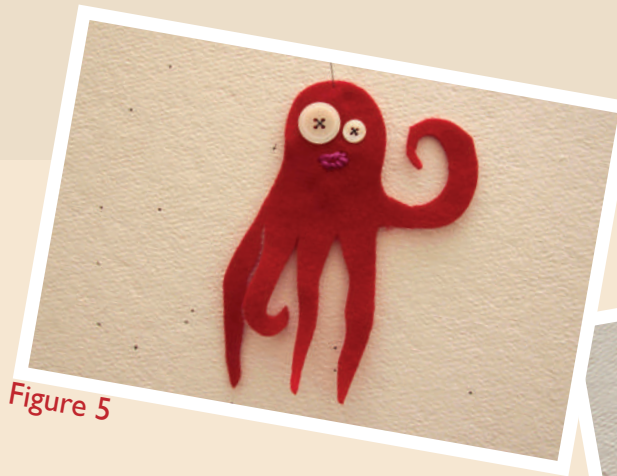


Figure 5



Figure 6



Variations

This card lends itself to all sorts of funny creatures and occasions. We suggest sticking with animals that will dangle off the edge of the card in some fashion e.g: jellyfish. Cut a semicircle out of felt, and cut many 13cm lengths of strands of wool to make the tentacles. Consider gluing or sewing a length of bric-a-brac along the bottom edge of the circle to simulate the curvy edge of the jellyfish's belly. Glue down the tentacles, letting them dangle off the edge of the card. Trim as necessary.

Many-eyed spider

Make a festive Halloween card by cutting an oval out of black felt and adding strips of black felt for legs. Glue down goggle eyes, or sew on multiple buttons (the more the better!). Consider gluing down yarn or embroidery thread in the background to make a web.

Happy whale

Cut a whale shape out of felt. Glue a sprinkle of dots above it to represent a spray of water. Sew a smile on its face, and add a few lines of stitching to its belly for texture. This makes a great birthday, Valentine, or everyday greeting card!

POPOP BIRDY EASTER HELLO

By Kate Sutton
For Ages 8 - 14

This peppy pop-up card makes us want to burst into song! Outside, a little birdy peeps, inside the chicks cheep! The element of surprise makes this a perfect Easter card, as well as a cheerful way to just say Hello.

You'll need:

- Gouache or acrylic paints
- Brush
- 8cm x 20cm folded card
- Ruler
- Craft knife / Scissors
- Cutting mat, or a magazine
- Bone folder
- Black pen
- Glue stick
- 8cm x 20cm of text weight paper to match your card
- 2 goggle eyes (optional)



HOW TO:

1. Cut the bird's beaks

Cut three horizontal slits, roughly 2cm long, across the fold line. These should be an equal distance apart or where you would like the centre of your birdies' faces. The fold line needs to be at the centre of each slit.

2. Fold the bird's and draw on details

Fold your card, keeping the bird-body spots on the inside (Figure 2). Align your ruler from a point on the fold 3.5cm (4cm for larger birds) above the first slit diagonally to the end of the slit. Score this line using your bone folder. Keeping the card folded, align your ruler from a point on the fold 1cm below the first slit diagonally to the end of the slit.

Score this line using your bone folder. Turn your card over and repeat on the other-side of the slit. Repeat this process for the top, bottom, front and back of each slit. The result should be a diamond shape around each slit. Open your card up and push the slits from the outside of the card towards you, popping the paper out to create your bird's beaks.

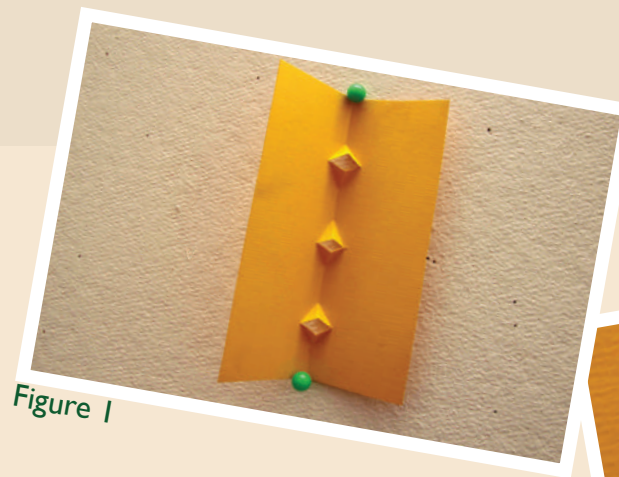


Figure 1

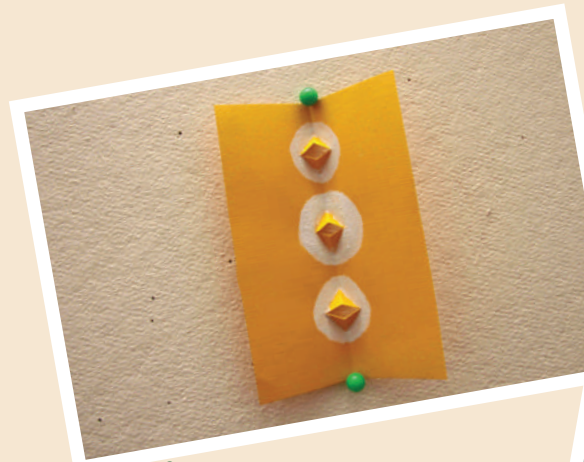
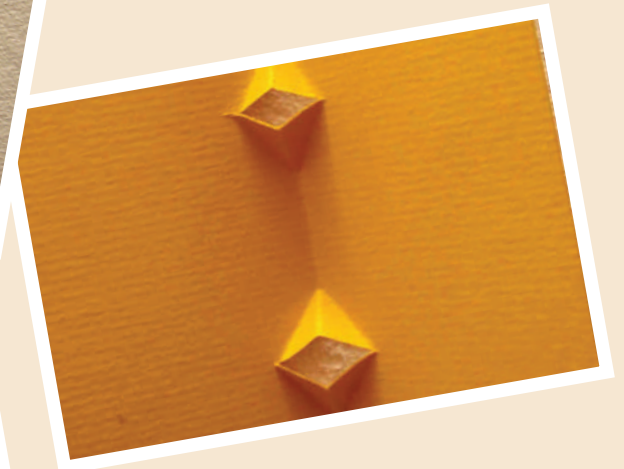


Figure 2



Draw or paint each bird's face around the slits (Figure 2).

3. Adhere the front of the card

Lay your matching text-weight paper, wrong side up, on your work surface (this will be the front of your card, covering the back side of the birds' beaks). Apply glue to the right and left edges of the back of your birdie card. Center the birdie card on the text weight paper and smooth to adhere. Carefully fold the card and paper together, smoothing out any air bubbles. Unfold the card and trim any excess card stock along the edges, using your utility knife, ruler, and cutting mat.

4. Decorate the front of the card

Paint or collage another bird on the front of your card and finish with goggle eyes.

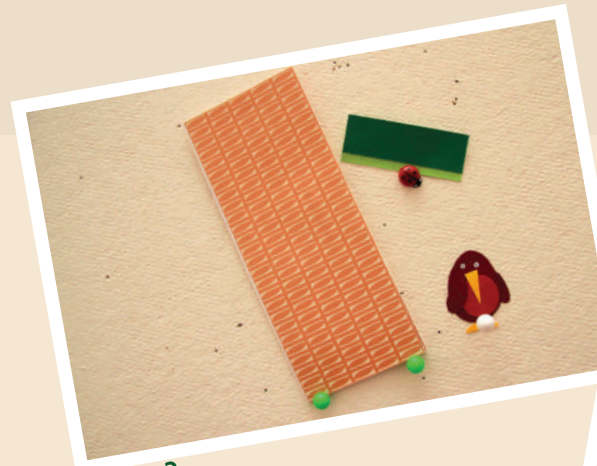
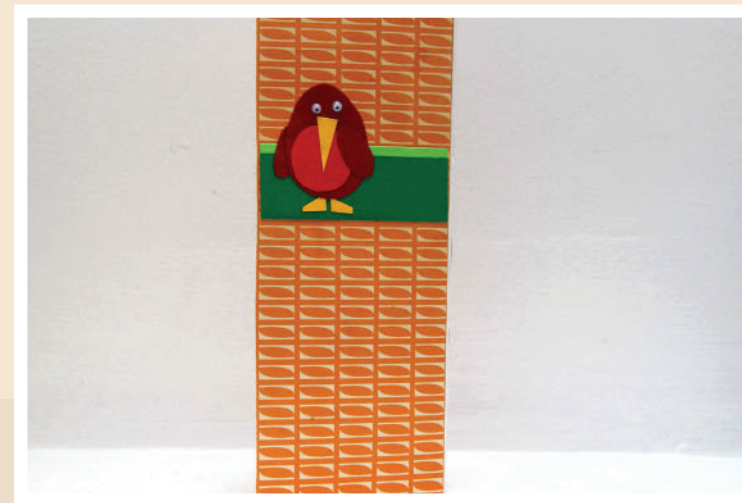
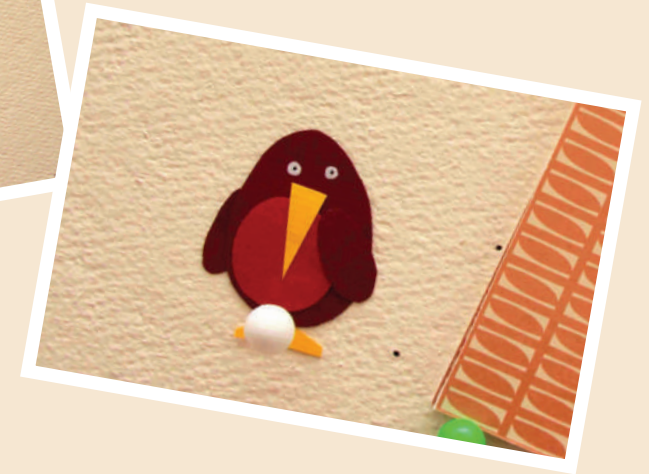


Figure 3



Variations

Open wide!

For added dimension, add colour to the inside of the birds' beaks by sandwiching a piece of red or pink paper between the front and back of the card. Before step 4, cut a strip of paper approximately 1 cm shorter than the length of the card and 2.5cm wider than the cuts you made for the birds' beaks. Fold this strip of paper in half lengthwise, and apply glue to the right and left edges on the right side. Align the fold in the paper with the card fold covering the back side of all the birds' beaks. Press firmly along the edges of the paper to adhere. Continue to step 4.

Decorate your envelope

Using your black pen, doodle hints as to what is inside – an amusing worm, a birdcage, a nest with some eggs for a baby announcement – or paint another bird, perhaps peeping up from the bottom of the envelope.

Playful paper

To make the card even more exuberant, consider using a piece of text weight paper in a playful colour or pattern for the outside of your card.

Christmas carolers

Add Santa hats to each of the birdies by painting triangles on their heads using red gouache. Glue down cotton trim for extra flair, or add details using white gouache or a gel pen.

Repeating refrain

Have lots to crow about? Add another chorus of birdies. Start with a piece of card stock that is three (or more!) times as wide as your envelope, less 1 cm on all sides. Fold it in thirds so that the two flaps close over the middle panel. Follow the original instructions to each to make each column of birds and beaks.

PAPER PORTRAIT FRIENDSHIP CARD

by La Familia Green
For Ages 8 - 15

What better way to make your friend the centre of attention than to put their face on a card? This project makes a great birthday card, valentine, or thinking-of-you card and give those of us who aren't born artists easily achieve pop art status.

You'll need:

- Glue stick
- Photo of a friend or family member
- Photocopier or printer
- Pencil
- Two sheets of tracing paper
- 4 to 6 assorted sheets of text-weight paper in solid colour (including a colour that matches your loved one's skin tone)
- Craft knife / Scissors
- Ruler
- Cutting mat, or a magazine
- Glue stick
- Bone folder
- 16cm x 16cm folded card
- Ballpoint pen



HOW TO:

1. Photocopy the picture

Make a black-and-white photocopy of your photo, reducing or enlarging it as necessary to fit the size card you want to make (Figure 1). Decide which elements of the photo really define your friend's face, and crop or centre the photocopy around those details. In this example, the card focuses on her haircut, smile, jacket, and scarf.

2. Trace the photo

Using a pencil and tracing paper, trace the outer edges of the head and neck, as well as any other details you would like to include (Figure 2). Set the tracing aside until Step 4; this will be the template you'll use to help guide the placement of the cut-out features. Take a second sheet of tracing paper and repeat, this time tracing each element onto a separate area of paper (Figure 3); you will be cutting out each element in the next step.



Figure 1



Figure 2



Figure 3



Figure 4

3. Cut out the features

Choose a text-weight paper that matches your friend's skin tone. Place your tracing of the head and neck onto your paper, right side up, and cut the shape out with your utility knife, cutting through both the tracing paper and text-weight paper. Repeat for the hair, jacket or any other details you have traced, choosing appropriate coloured paper or each part (Figure 4).

4. Attach the head, neck, and remaining features to the front of the card. Apply glue to the back of the head cut-out and center the piece on the front of your card, smoothing it with the bone folder to adhere. Take your traced template and place it right side down on your work surface. Retrace the features using a pencil. Turn the tracing right side up and align it with the face and neck. Using a ballpoint pen, retrace the features, pressing firmly, to transfer the outline to the front of your card. Attach the remaining features, using the outline you just made to guide placement (Figure 6). Consider embellishing with other details, such as cheeks, earrings, hats, scarves, or freckles (Figure 7).



Figure 5



Figure 6



Variations

Pattern portrait

Create a patterned background for your portrait to add depth to the card: Choose a patterned text-weight paper and trim it to a slightly larger size than your folded card. Apply glue to the back of your selected paper and lay it facedown on your work surface. Place the front of the folded card onto your paper (keeping the card folded) and press firmly to adhere. Next, take the right-hand side of your patterned paper and fold it over the back of your folded card; smooth out any air bubbles. Unfold the card and trim excess. Also consider choosing unexpected (but flattering!) patterns for your friend's hair or other features.

Doodle details

Add details to your portrait using a regular or coloured pen. Draw a decorative collar, or add details that are too fine to cut out of paper.

Pet portrait

Use the same technique to create a portrait of your friend's dog, cat, hamster, or parakeet. Use it as an everyday card, a thank you note for pet-sitting, or as a thoughtful pet sympathy note.

Bride and groom

Apply the technique to a photo of your favourite couple and present it to them on their wedding day. It will make a great addition to their wedding scrapbook!

FRIENDLY OWL

By Petra Boase
For Ages 5 - 11

A wise and quirky bird, this owl is the perfect ambassador for all your wit and wisdom. We especially love the layering of patterned papers, buttons, and, of course, the goggle eyes.

You'll need:

- Scissors
- Friendly Owl template
- Pencil (for tracing)
- 6 to 8 pieces of paper or fabric roughly 13cm x 18cm per piece
- Glue stick
- 15cm x 20cm folded card
- 2 goggle eyes
- 2 buttons



HOW TO:

1 Trace and cut the owl

Cut out the Friendly Owl template shapes (Figure 1/2). To do this, trace the pieces of the template onto your selected papers and fabrics, choosing different patterns for each body part. Make sure to place the papers and fabrics facedown when tracing so that your trace marks don't show on the finished card.

2 Cut and adhere the background

Select a paper or fabric for your background and trim to a size equal to or somewhat smaller than the front of your card - no need to be precise, a little crookedness adds to the charm of this card. Apply glue to the wrong side of the background piece and adhere the piece to the front of your card.

3 Add the owl

Apply glue to the wrong sides of the various parts of your owl and stick the pieces to the card, starting with the body and layering pieces on top. Apply glue to the wrong side of the goggle eyes and adhere (Figure 5/6).

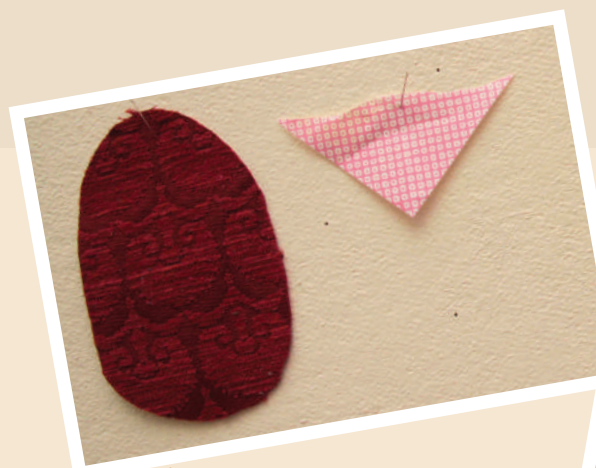


Figure 1



Figure 2



Figure 3



Figure 4

4 Embellish the card

Cut out freestyle branch and flower shapes from a paper or fabric of your choice. Apply glue to the wrong sides and adhere the branch and then the flowers to the card (Figure 3). Apply glue to the backs of your buttons and centre them on the flowers, pressing firmly to adhere. (Figure 4). Set the card aside for about 30 minutes, or until the glue is completely dry.

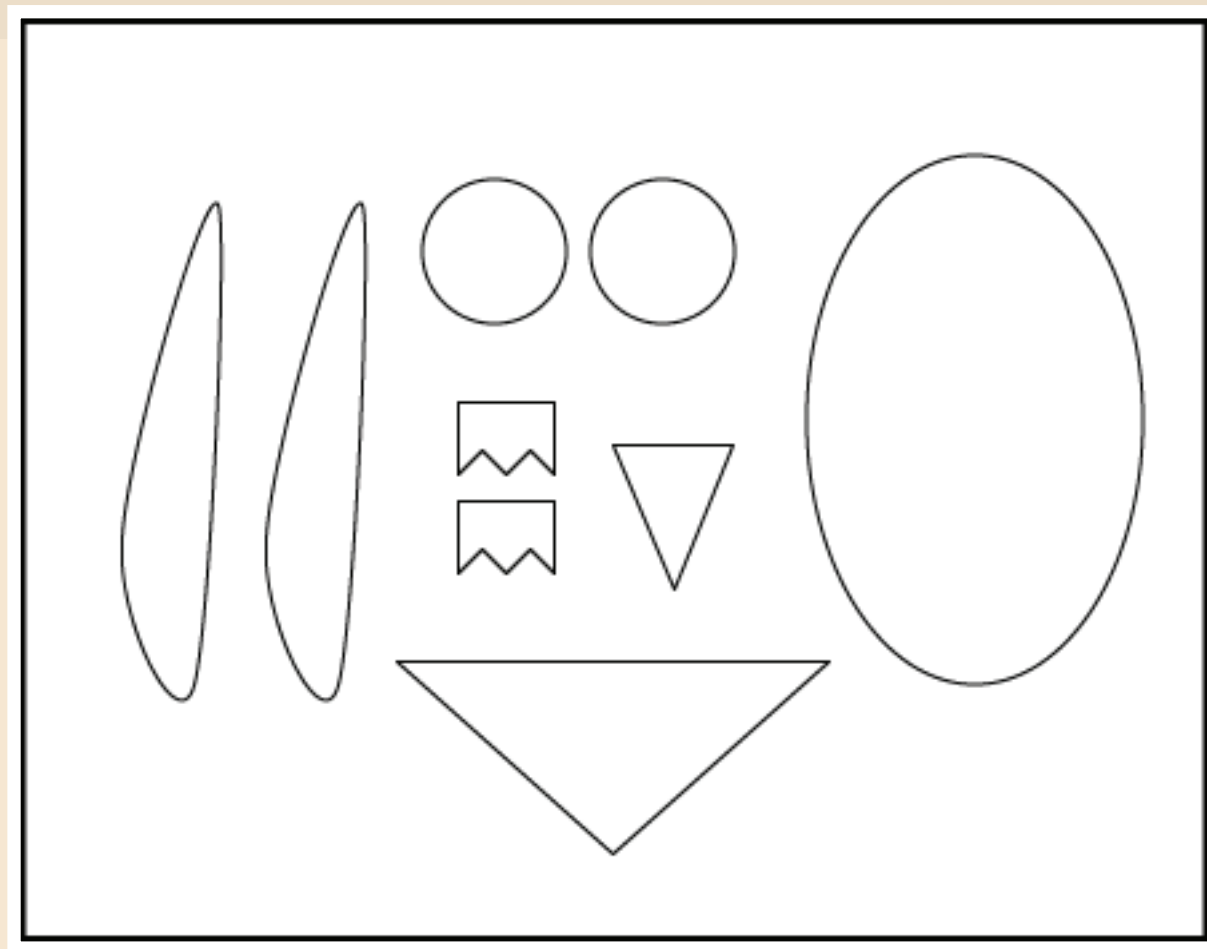


Figure 5



Figure 6





Friendly Owl Template

Variations

Child's birthdays

Kids are sure to love this card, so consider making one for a little friend's birthday (just make sure the child is old enough that the goggle eyes and buttons don't present a choking hazard.)

Wise, old owl

The owl is known to symbolize wisdom. Think about giving this card for a graduation or birthday (older and wiser!)

Spooky owl

Choose black and orange papers or fabrics and transform this into a fabulous Halloween card. Add a full moon to the background by cutting a circle out of yellow construction paper or fabric.

Who loves you?

Make this card out of pink and red papers or fabrics. If puns are your thing, add the irresistible caption.

Snow owl

Make your owl out of winter-white or glittery papers or fabrics for a fresh and festive holiday greeting.

With thanks to Hello! Lucky Letterpress for providing the content inspired by Handmade Hellos, published by Chronicle Books ISBN 978-0-8118-6239-4

© Card designs by Petra Boase, La Familia Green, Kate Sutton and Daniel James.

Design and layout by David Ashley